

+

TFA

PARC Night Vision

MW101

FOUR-LIGHT MULTIFUNCTIONAL
HANDHELD NIGHT VISION INSTRUMENT





NIGHT AND DAY SCENE



TARGET LOCATION



TARGET TRACKING



TARGET GUIDANCE



FOG-PERMEATING
FUNCTION



LASER INDICATION



INFRARED MODE



VISIBLE LIGHT MODE



FUSION MODE



ELECTRONIC MAP



OLED



WIFI TRANSMISSION

1

INFRARED/LOW LIGHT/VISIBLE LIGHT CAN BE MEASURED

NIGHT AND DAY SCENE

FOUR-LIGHT MULTIFUNCTIONAL HANDHELD IS A SMALL INTELLIGENT OBSERVATION EQUIPMENT THAT INTEGRATES INFRARED, LOW-LIGHT AND VISIBLE LIGHT, USED FOR DAY AND NIGHT OBSERVATION AND SEARCH TARGETS.



(IR) INFRARED MODE



(LL) LOW-LIGHT MODE



(TV) VISIBLE LIGHT MODE

RESOLUTION

640×512, 12 μ m

OPERATING BAND

8~14 μ m

FIELD ANGLE

6.1°×4.8°

RESOLUTION

4.6 MEGAPIXEL

FIELD ANGLE

4.6°×3.7°

RESOLUTION

750×600

LOW LIGHT CAPACITY

0.001lux

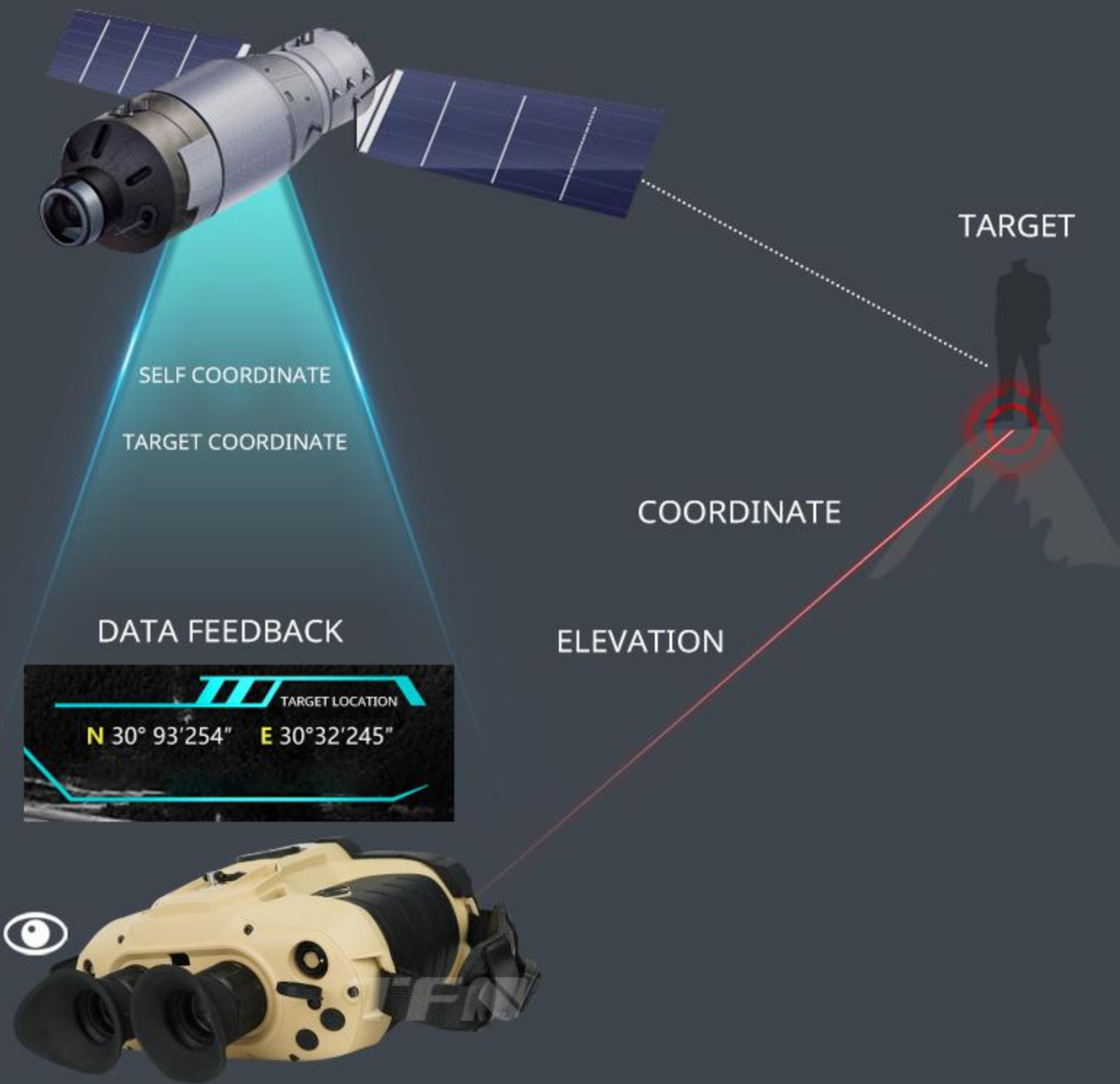
FIELD ANGLE

6.8°×5.5°

2

BEIDOU /GPS/ LASER RANGING REAL-TIME TARGET LOCATION

IN THE OBSERVATION INTERFACE, WHEN THE RANGEFINDER IS ON, SHORT PRESS THE RANGEFINDER KEY FOR SINGLE DISTANCE MEASUREMENT, AND THE TARGET DISTANCE IS DISPLAYED AT THE BOTTOM RIGHT OF THE SCREEN. IF THE POSITIONING MODULE RECEIVES EFFECTIVE SIGNALS AT THIS TIME, IT WILL CALCULATE THE POSITIONING INFORMATION OF THE TARGET AT THE SAME TIME AND UPDATE IT AT THE BOTTOM RIGHT OF THE SCREEN



LASER RANGING PERFORMANCE	
WAVELENGTH	1535nm
MAXIMUM RANGE	≥6km
MINIMUM RANGE	≤5m
RANGE ACCURACY	2m

ELECTRONIC COMPASS FUNCTION	
MAGNETIC AZIMUTH MEASUREMENT RANGE	0~360°
MAGNETIC AZIMUTH MEASUREMENT ACCURACY	0.5°
PITCH ANGLE MEASUREMENT RANGE	-90°~+90°
PITCH ANGLE MEASUREMENT ACCURACY	0.4°
ANGLE OF INCLINATION MEASUREMENT RANGE	-180°~+180°
INCLINATION ANGLE MEASUREMENT ACCURACY	0.5°

3

INFRARED/LOW LIGHT/VISIBLE LIGHT CAN BE MEASURED

TARGET GUIDANCE FUNCTION

THE ORIENTATION INFORMATION OF THE TARGET RELATIVE TO THE HAND IS CALCULATED ACCORDING TO THE INPUT COORDINATES, AND THE DIRECTION THAT THE HAND NEEDS TO ROTATE IS INDICATED BY THE ARROW ON THE SCREEN UNTIL THE TARGET IS DISPLAYED IN THE CENTER OF THE SCREEN



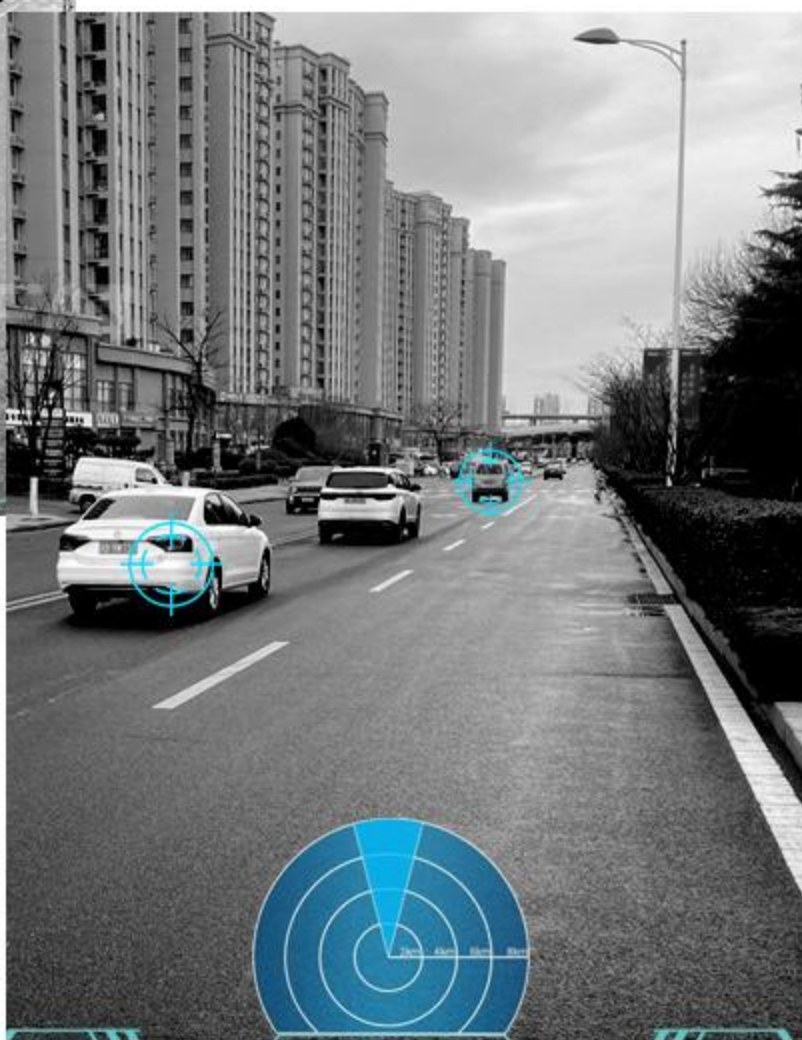
4

LOCK 4 TARGETS AT THE SAME TIME, NOT EASY TO LOSE SIGHT

TARGET TRACKING LOCKING

THIS FUNCTION CAN LOCK A MAXIMUM OF FOUR TARGETS. IF THE TARGET NUMBER IS FULL AND YOU CONTINUE TO SELECT THE TARGET TO BE LOCKED, THE EARLIEST MARKED TARGET WILL BE AUTOMATICALLY REPLACED AND SAVED.

是否锁定此目标?



5

AS CLEAR AS RAIN AND FOG

DAYTIME FOG PENETRATION FUNCTION

DESIGNED FOR RAIN AND FOG, THIS FEATURE PROVIDES CLEAR VISIBLE-LIGHT IMAGING WITH A FOG PENETRATION RATIO UP TO 1.5.

THE FOG PENETRATION FUNCTION IS DISABLED

FIELD IMAGE



THE FOG PENETRATION FUNCTION IS ENABLED

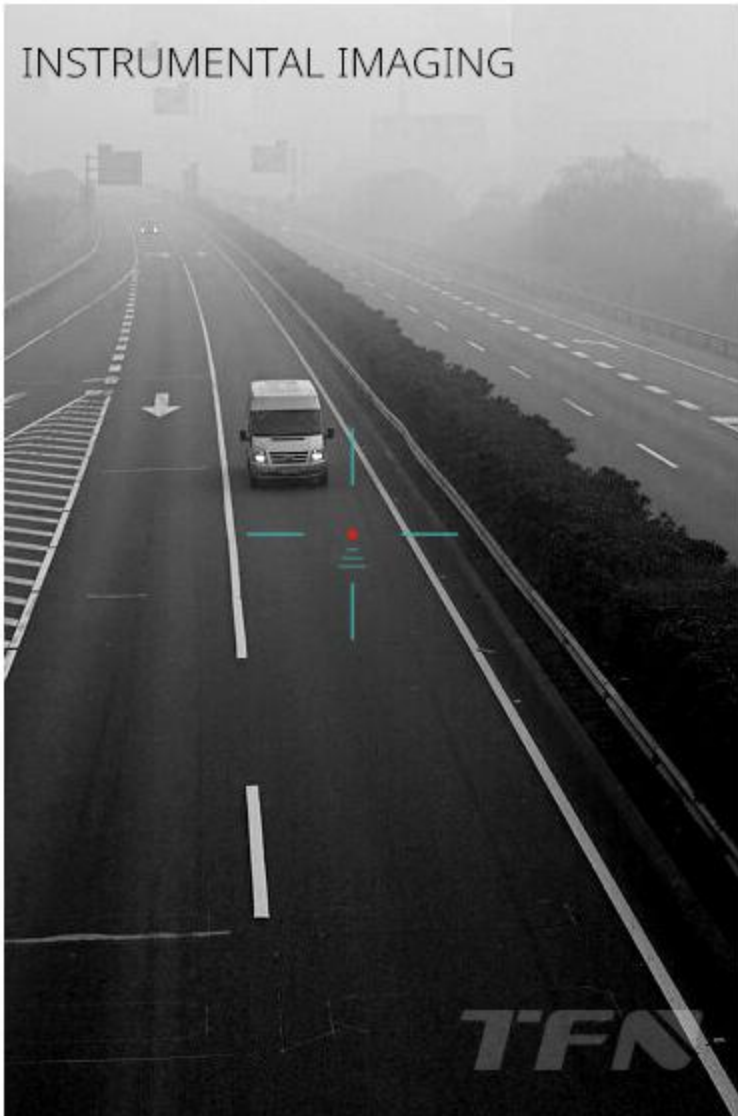
INSTRUMENTAL IMAGING



FIELD IMAGE



INSTRUMENTAL IMAGING



FIELD IMAGE

SHORT PRESS ○

● LONG PRESS



DISTANCE KEY

○ SINGLE RANGING

● LASER RANGING ON/OFF



FUNCTION KEY

○ ENTER THE SYSTEM MENU

● SWITCH IMAGE MODE



BEAT KEY

○ TAKE PICTURES

● START/STOP RECORDING



POWER KEY

○ SHUTTER CORRECTION
RETURN/EXIT

● SWITCHING MACHINE



NAVIGATION SPLICE
DC/USB/PAL
/RS232

PROXIMITY LIGHT SENSOR

HDMI INTERFACE



KNOB

MICROPHONE

FOCUS BUTTON





EXTERNAL TRANSMISSION INTERFACE

CAN CONNECT THE DISPLAY
OR DIRECTLY EXPORT THE FILE



PERFORMANCE

INFRARED THERMAL IMAGING PERFORMANCE	
--------------------------------------	--

RESOLUTION	640×512, 12μm
OPERATING BAND	8~14μm
FIELD ANGLE	6.1°×4.8°

LOW-LIGHT IMAGING PERFORMANCE	
-------------------------------	--

RESOLUTION	750×600
LOW LIGHT CAPACITY	0.001lux
FIELD ANGLE	6.8°×5.5°

VISIBLE LIGHT IMAGING PERFORMANCE	
-----------------------------------	--

RESOLUTION	4.6 MEGAPIXEL
FIELD ANGLE	4.6°×3.7°

LASER RANGING PERFORMANCE	
---------------------------	--

WAVELENGTH	1535nm
MAXIMUM RANGE	≥6km
MINIMUM RANGE	≤50m
RANGING ACCURACY	2m

LASER INDICATION PROPERTY	
WAVELENGTH	830nm
SAFETY LEVEL	5mW, Class IIIA
DISPLAY PERFORMANCE	
RESOLUTION	1280×1024
EXTERNAL INTERFACE	
NAVIGATION SLOT	DC/USB/PAL/RS232
DISPLAY	HDMI
WIRELESS TRANSMISSION	WIFI
OVERALL PERFORMANCE	
STORAGE	64G
EYEPiece VISIBILITY	-4~+4
WEIGHT	2.1kg
WORKING TIME	≥8h
OPERATING TEMPERATURE	-40℃~+55℃
STORAGE TEMPERATURE	-55℃~+70℃
WATERPROOFING CLASS	IP67

POSITIONING MODULE PERFORMANCE

POSITIONING MODE	BeiDou Navigation/GPS
HORIZONTAL POSITIONING ACCURACY (CEP)	5m
ELEVATION POSITIONING ACCURACY (PE)	10m

ELECTRONIC COMPASS PERFORMANCE

MAGNETIC AZIMUTH MEASUREMENT RANGE	0~360°
MAGNETIC AZIMUTH MEASUREMENT ACCURACY	0.5°
PITCH ANGLE MEASUREMENT RANGE	-90°~+90°
PITCH ANGLE MEASUREMENT ACCURACY	0.4°
ANGLE OF INCLINATION MEASUREMENT RANGE	-180°~+180°
INCLINATION ANGLE MEASUREMENT ACCURACY	0.5°

PRODUCT DISPLAY









